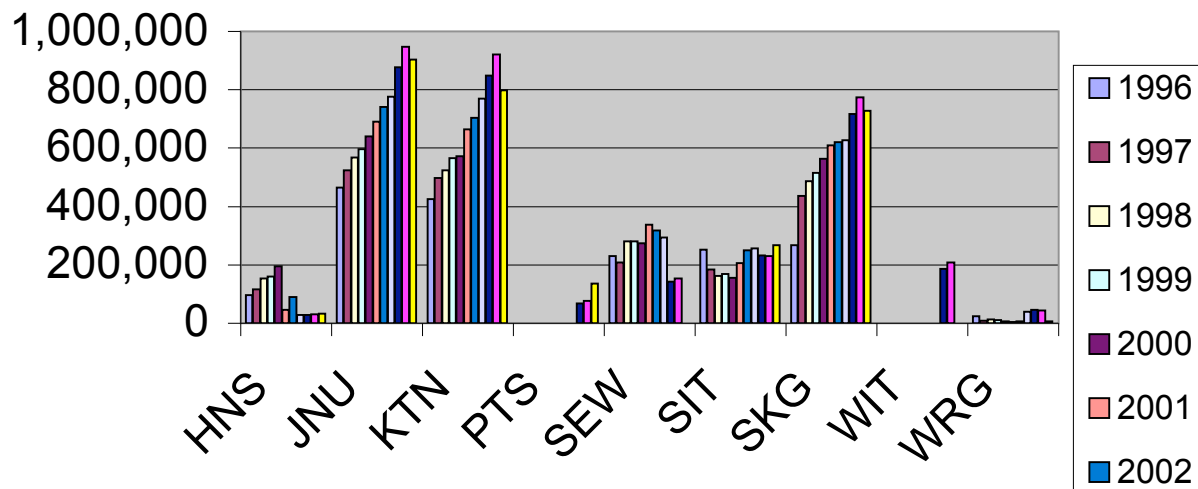


Cruise Ship Passengers (by port)

	1996	1997	1998	1999	2000	2001	2002	2003	2004	2005	2006 est
HNS	95,988	116,982	153,355	159,734	195,466	45,804	90,595	28,479	29,566	30,832	33,580
JNU	464,484	524,842	568,524	595,959	640,477	690,648	741,512	776,991	876,203	948,226	902,651
KTN	425,104	497,808	523,108	565,005	572,464	665,221	703,130	770,805	848,969	921,429	798,749
PTS	0	0	0	0	0	0	0	0	67,620	77,498	135,510
SEW	230,042	208,900	280,543	280,229	274,733	337,241	316,888	293,230	141,902	152,557	
SIT	252,256	183,562	161,351	168,024	156,019	206,279	250,241	256,782	232,399	229,793	267,602
SKG	268,443	435,554	486,528	514,940	563,669	610,145	621,331	628,006	716,453	774,361	728,356
WIT	0	0	0	0	0	0	0	0	186,682	208,703	
WRG	24,426	8,347	12,255	11,987	6,702	4,805	6,136	39,096	45,947	44,760	6,340

Passengers by Port



	HNS	JNU	KTN	PTS	SEW	SIT	SKG	WIT	WRG
1996	95,988	464,48	425,10	0	230,04	252,25	268,44	0	24,426
1997	116,98	524,84	497,80	0	208,90	183,56	435,55	0	8,347
1998	153,35	568,52	523,10	0	280,54	161,35	486,52	0	12,255
1999	159,73	595,95	565,00	0	280,22	168,02	514,94	0	11,987
2000	195,46	640,47	572,46	0	274,73	156,01	563,66	0	6,702
2001	45,804	690,64	665,22	0	337,24	206,27	610,14	0	4,805
2002	90,595	741,51	703,13	0	316,88	250,24	621,33	0	6,136
2003	28,479	776,99	770,80	0	293,23	256,78	628,00	0	39,096
2004	29,566	876,20	848,96	67,620	141,90	232,39	716,45	186,68	45,947
2005	30,832	948,22	921,42	77,498	152,55	229,79	774,36	208,70	44,760
2006 est	33,580	902,65	798,74	135,51		267,60	728,35		6,340